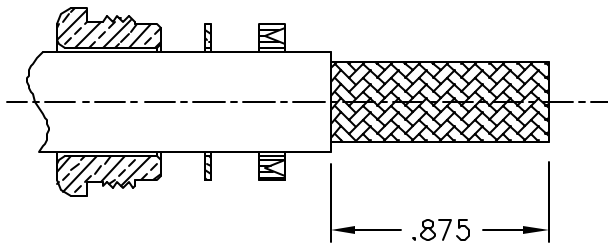
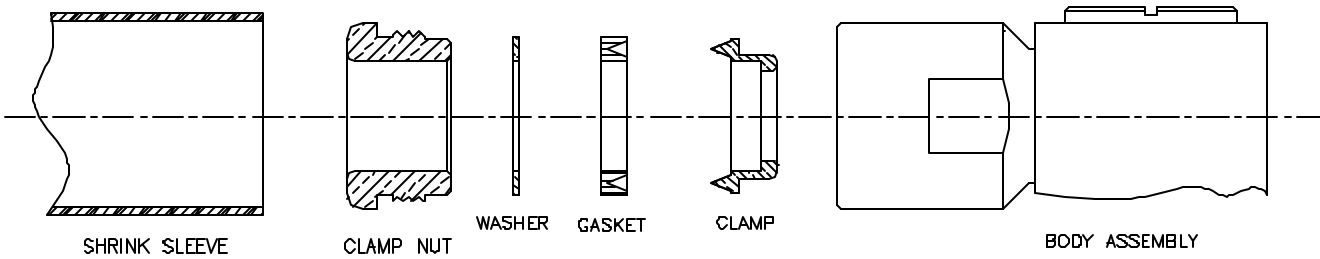
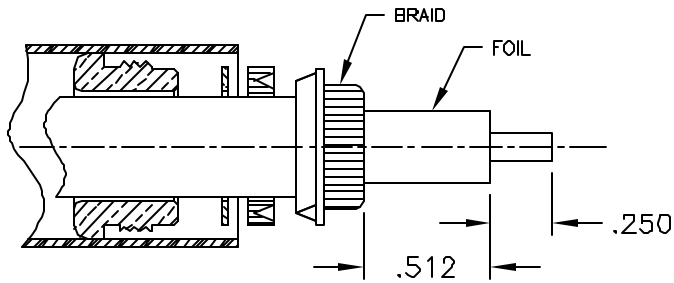


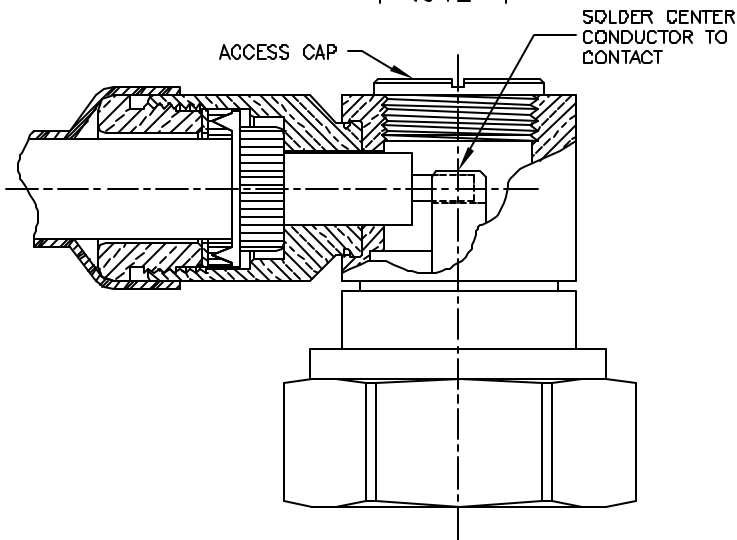
INSTALLATION INSTRUCTIONS TC-400-716MC-RA (3190-1671) (Cable Types: LMR-400 CABLE)



1. Trim cable jacket to dimension shown. Slide clamp nut, washer, gasket and clamp onto cable as shown. Cable jacket should bottom on step in braid clamp.



2. A. Slide clamp onto cable till jacket sits flush inside clamp. Comb both braid wires out straight and fold back over front shoulder of braid clamp (braids should not overlap one another after folding). Trim wires flush with step of braid clamp. Trim cable dielectric and center conductor to dimensions shown.



- B. Slide shrink sleeve over cable.
3. A. Insert prepared cable and hardware into body assembly and tighten clamp nut. Inspect to be sure aluminum tape is not touching center contact. Solder center conductor into slot in contact and tighten access cap.
- B. Slide shrink sleeve into place & heat shrink over rear of body & onto cable jacket with hot air gun.