

Connector Installation instructions for a
716-DIN FEMALE Clamp-on for LMR-600

Connector part number:

3190-375

TC-600-716FC

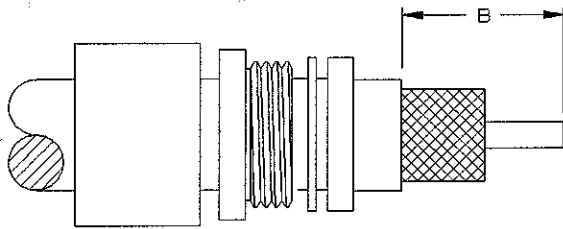
ADDS : 0.400"

REV. B DATE: 11-11-96

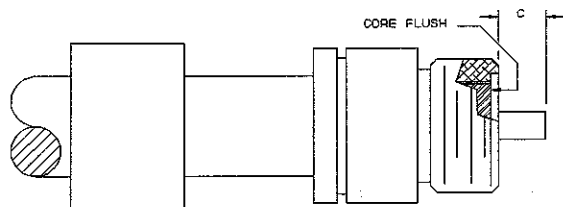
Eng: JP App: JP

CDC CHANGES: 18800, _____, _____

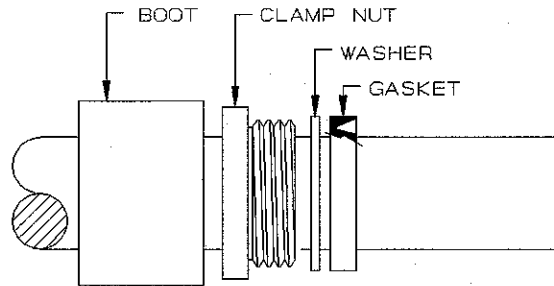
STEP 3. Expose outer braid. $B = 0.500''$
Do not to nick the braids when removing
the cable jacket.



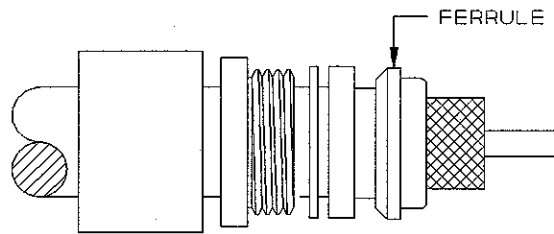
STEP 6. Install Conn Body. $C = 0.200''$ MAX.
Check for proper pin height. Apply Loctite 242
(blue) to Clamp nut threads. Thread Clamp nut into
conn body. Torque to 130 in-lbs.



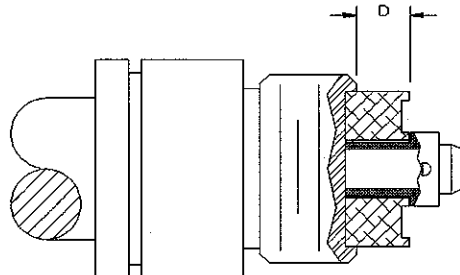
STEP 1. Flush cut end of cable using a fine saw
blade. Cut cable so that end remains round and
face of cable is perpendicular to its length.
Slide on: Shrink boot, Clamp nut, Washer, Gasket.



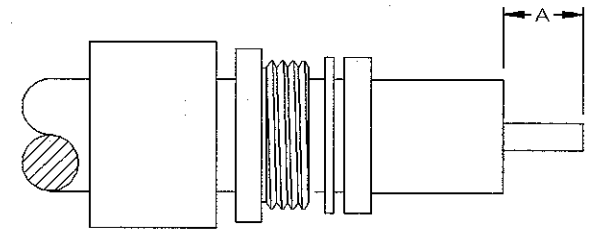
STEP 4. Slide on the Ferrule.
Make sure all braids come up thru the Ferrule as
shown on the drawing. Use tape at end to hold
braids if necessary.



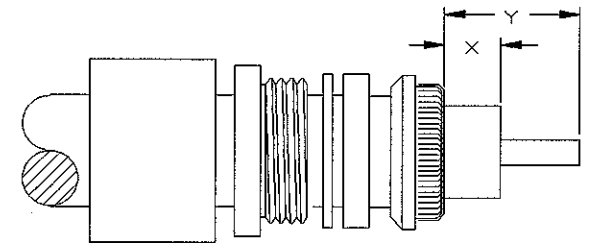
STEP 7. Solder on Contact. $D = 0.161''$
Solder on the contact using 60/40 solder.
Feed solder thru solder hole while heating the
contact. Spacer to be oriented as shown.



STEP 2. Expose conductor. $A = 0.250''$
Cut thru cable jacket, braids, and dielectric core
Do not nick the cable conductor.



STEP 5. Flare out braids but do not comb them
out. Trim braids to shoulder of ferrule.
Trim core back to this dimension: $X = 0.115''$
Trim conductor back to this dimension: $Y = 0.350''$



STEP 8. Install Body & Strain relief boot.
Thread on front body. Torque to 130 in-lbs.
Position boot onto connector body. Apply hot air
until boot is smoothly seated onto both cable and
connector. Use only adhesive lined shrink boot.

