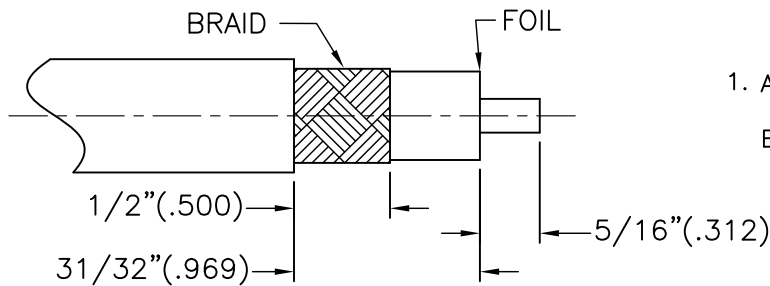
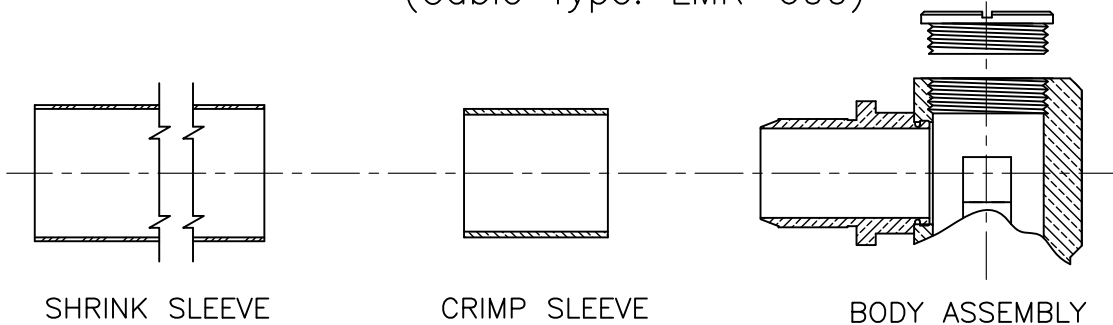


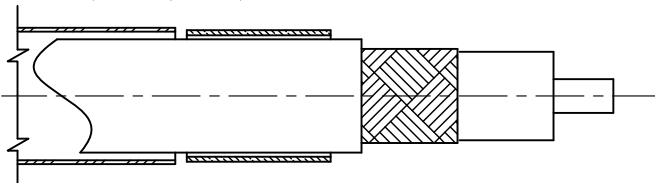
# TIMES MICROWAVE SYSTEMS

358 Hall Avenue/P.O. Box 5039  
Wallingford, CT 06492-5039  
Tel: 203-949-8400  
FAX: 203-949-8423  
1-800-TMS-COAX  
www.timesmicrowave.com

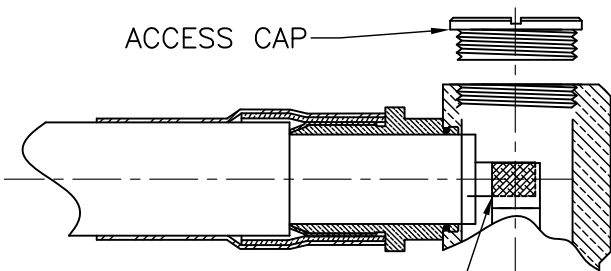
## INSTALLATION INSTRUCTIONS TC-600-716M-RA (3190-395) (Cable Type: LMR-600)



1. A. Trim cable per dimensions shown.  
B. Remove any residual plastic from the center conductor and deburr center conductor using a fine file.



2. A. Slide shrink sleeve & crimp sleeve over cable.



3. A. Insert cable into connector until fully seated, with all braid wires on the outside of connector body and aluminum tape inside connector body.  
B. Slide crimp sleeve forward and crimp as close as possible to body using a .610 hex die. Use Times HX-4 crimp tool or equivalent. Do not crimp rear of crimp sleeve.  
C. Solder center conductor to contact. Use minimal heat to minimize melting of foam dielectric. Inspect to be sure aluminum foil is not touching center contact. Install access cap.

SOLDER ALL AROUND

- D. Heat-shrink weather seal over rear of connector body and down onto cable jacket using hot air gun.

CAI-350