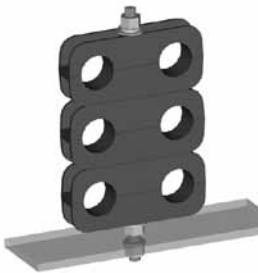


**Mini Coax Support Blocks**



*Neatly stack coax into space saving bundles. Lower material cost by reducing hardware requirements.*

Application: Coax Support  
 Size: 1/2" to 1-1/4" coax  
 Design: Two-run block hangers  
 Feature: Compact coax bundles  
 Mounts to: 3/8" or 10mm threaded rod  
 Material: Long glass polypropylene  
 Includes: Blocks only  
 Order Sep.: 3/8" or 10mm mounting hardware kits

	TMS part no.	Quant/pkg.	Weight lb (kg)
Mini coax support block for LMR-600	CB-600T	10	1.2 (0.5)
Mini coax support block for LMR-900	CB-900T	10	1.2 (0.5)
Mini coax support block for LMR-1200	CB-1200T	10	1.2 (0.5)
Mini coax support block for LMR-1700 coax	CB-1700T	10	1.7 (0.8)

**Mounting Hardware Kits for Coax Support Blocks and Hanger Clamps**



*Pre-cut galvanized threaded rod hardware kits for stacking and installing mini coax support blocks.*

Application: Coax Support  
 Size: 3/8"  
 Design: 1, 2, and 3-stack threaded rod kits  
 Feature: Stacks coax blocks  
 Mounts to: —  
 Material: Galv. (3/8") or stainless steel (10mm)  
 Includes: Threaded rod and hardware  
 Order Sep.: Additional accessories

	TMS part no.	Quant/pkg.	Weight lb (kg)
Hardware kit for LMR-600, 900, 1200 support blocks	HK-SSCB	10	1.8 (0.8)
Hardware kit for LMR-1700 support blocks	HK-SSCB-158	10	1.9 (0.9)
Hardware kit for mounting (2) mini coax support blocks for LMR-600, 900, 1200	HK-DSCB	10	2.3 (1.0)
Hardware kit for mounting (2) mini coax support blocks for LMR-1700	HK-DSCB-158	10	2.5 (1.1)
Hardware kit for mounting (3) mini coax support blocks for LMR-600, 900, 1200	HK-TSCB	10	2.8 (1.3)
Hardware kit for mounting (3) mini coax support blocks for LMR-1700	HK-TSCB-158	10	3.2 (1.5)

**Adapter Bracket**



*Support coax blocks in wall mount applications.*

Application: Coax Support  
 Size: 7/16" (11.1mm) holes  
 Design: Adapts hangers to flat surfaces  
 Feature: Compact design  
 Mounts to: —  
 Material: Stainless steel  
 Includes: Bracket  
 Order Sep.: Additional accessories

	TMS part no.	Quant/pkg.	Weight lb (kg)
Adaptor bracket	AB-CB	10	4.6 (2.1)


**Stainless Steel Adapter Bracket**




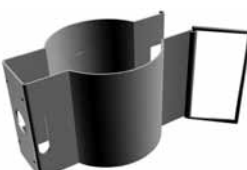
*Adapt angled members for securing coax cables. Unique design easily converts to accommodate snap-in hangers.*


Application: Coax Support  
 Size: 7/16" (11.1mm) holes  
 Design: Adapts hangers to flat surfaces  
 Feature: Fits any bolt-on hanger style  
 Mounts to: —  
 Material: Hot dip galv. steel,  
 Includes: Bracket  
 Order Sep.: Additional accessories

	TMS part no.	Quant/pkg.	Weight lb (kg)
Universal SST angle adapter	AB-CBH	1	2.3 (1.0)

<b>Butterfly Hangers</b>						
	<i>Butterfly hangers for standard non-snap-in installations.</i>	<b>Application:</b> Coax Support <b>Size:</b> see chart <b>Design:</b> Bolt-on single run hanger <b>Feature:</b> Traditional hanger solution <b>Mounts to:</b> 7/16" (11.1mm) prepunched hole <b>Material:</b> Stainless steel <b>Includes:</b> Hangers and set bolts <b>Order Sep.:</b> Hanger hardware kits & additional accessories <b>Note:</b> Hanger hardware kit not included; order separately				
		TMS part no.	Quant/pkg.	Weight lb (kg)		
		Butterfly hanger for LMR-400	BH-S38 NH	10	1.0	(0.5)
		Butterfly hanger for LMR-600	BH-12 NH	10	1.0	(0.5)
		Butterfly hanger for LMR-900	BH-58 NH	10	1.1	(0.5)
		Butterfly hanger for LMR-1200	BH-78 NH	10	1.1	(0.5)
Butterfly hanger for LMR-1700	BH-114 NH	10	1.4	(0.6)		

<b>Standard Hangers</b>						
	<i>Standard hanger for reduced installation time</i>	<b>App.:</b> Coax Support <b>Size:</b> See chart <b>Design:</b> Pre-formed bolt-on single run hanger <b>Feature:</b> Reduced installation time <b>Mounts to:</b> 7/16" (11.1mm) prepunched hole <b>Material:</b> Stainless steel <b>Includes:</b> Hangers and set bolts <b>Order Sep.:</b> Hanger hardware kits & additional accessories <b>Note:</b> Hanger hardware kit not included; order separately				
		TMS part no.	Quant/pkg.	Weight lb (kg)		
		Standard hanger for LMR-400	BH-S38 NH	10	0.8	(0.4)
		Standard hanger for LMR-600	BH-S12 NH	10	0.8	(0.4)
		Standard hanger for LMR-1200	BH-S78 NH	10	1.8	(0.8)
		Standard hanger for LMR-1700	BH-S114 NH	10	1.1	(0.5)

<b>Clip Hangers</b>						
	<i>Easy install solution</i>	<b>Application:</b> Coax Support <b>Size:</b> See chart <b>Design:</b> Clip-on single run hanger <b>Feature:</b> Easy-to-install solution <b>Mounts to:</b> 7/16" (11.1mm) prepunched hole <b>Material:</b> Stainless steel <b>Includes:</b> Hangers and set bolts <b>Order Sep.:</b> Hanger hardware kits and additional accessories <b>Note:</b> Hanger hardware kit not included; order separately				
		TMS part no.	Quant/pkg.	Weight lb (kg)		
		Clip hanger kit for LMR-600	CH-12 NH	10	0.8	(0.4)
		Clip hanger kit for LMR-1200	CH-78 NH	10	0.8	(0.4)
		Clip hanger kit for LMR-1700	CH-114 NH	10	1.1	(0.5)

<b>Universal Snap-in Hangers</b>						
	<i>Snap-in hangers simplify coax installation by eliminating the need for mounting hardware and installation tools.</i>	<b>Application:</b> Coax Support <b>Size:</b> See chart <b>Design:</b> One-piece hanger solution <b>Feature:</b> Simplifies coax installation <b>Mounts to:</b> 3/4" (19.1mm) holes <b>Material:</b> Stainless steel <b>Includes:</b> Hangers <b>Order Sep.:</b> Additional mounting accessories				
		TMS part no.	Quant/pkg.	Weight lb (kg)		
		Universal snap-in hanger for LMR-600	SH-U600T	10	0.7	(0.3)
		Universal snap-in hanger for LMR-900	SH-U900T	10	1.0	(0.5)
		Universal snap-in hanger for LMR-1200	SH-U1200T	10	1.2	(0.5)
		Universal snap-in hanger for LMR-1700	SH-U1700T	10	1.3	(0.6)

## Hanger Hardware Kits

	<i>Standard, clip and butterfly for flange attachment.</i>	<b>Application:</b> Coax Support <b>Size:</b> 3/8" or 10mm <b>Design:</b> Hardware kit for hanger attachment to member <b>Feature:</b> — <b>Mounts to:</b> — <b>Material:</b> Stainless steel <b>Includes:</b> Bolts, nuts, lockwashers <b>Order Sep.:</b> Hangers			
			TMS part no.	Quant/pkg.	Weight lb (kg)
	Hanger hardware kit, 3/8" x 3/4" slotted hex head bolts, lock washers and hex nuts	HK-34-10	10	0.5	(0.2)
	Hanger hardware kit, 3/8" x 1" slotted head bolts lock washers and hex nuts	HK-100-10	10	0.6	(0.3)
Hanger hardware kit, 10mm x 20mm slotted head bolts lock washers and hex nuts	HK-M1020-10	10	0.5	(0.2)	

## Universal Angle Adapters

	<i>Adapt angled members for securing coax hangers.</i>	<b>Application:</b> Coax Support <b>Size:</b> 3/4" (19.1mm) holes w/ 3/8" tapped insert <b>Design:</b> Adapts hangers to angle members <b>Feature:</b> Accepts snap-ins or 3/8" hardware <b>Mounts to:</b> Up to 7/8" (22mm) angle members <b>Material:</b> Stainless steel <b>Includes:</b> Adapters, set bolt, hanger hardware kit, avail. w/ or wo insert <b>Order Sep.:</b> Hangers			
			TMS part no.	Quant/pkg.	Weight lb (kg)
	Universal angle adapter for snap-ins or 3/8" tapped holes	AA-U	10	4.9	(2.2)
	Angle adapter, large version, with 3/8" threaded hardware	AA-US	10	4.7	(2.1)

## Angle Adapters

	<i>Adapt angled members for securing coax hangers using 3/8" threaded hardware.</i>	<b>Application:</b> Coax Support <b>Size:</b> 3/8" tapped holes <b>Design:</b> Adapts hangers to angle members <b>Feature:</b> High strength solution <b>Mounts to:</b> Up to 7/8" (22mm) angle members <b>Material:</b> Stainless steel <b>Includes:</b> Adapters, set bolt, hanger hardware kit <b>Order Sep.:</b> Hangers			
			TMS part no.	Quant/pkg.	Weight lb (kg)
	Angle adapter with 3/8" tapped holes	AA-SL	10	5.4	(2.5)
	Angle adapter with 10 mm tapped holes	AA-SL-M10	10	5.4	(2.5)

## Stand-Off Adapters

	<i>Adapt and stand coax off 2" from round members. Unique design easily converts to accommodate snap-in hangers. Round member adapters included unless noted.</i>	<b>Application:</b> Coax Support <b>Size:</b> 3/8" or 10mm tapped hole <b>Design:</b> Adapts hangers to round members <b>Feature:</b> Provides 2" (50.8mm) stand-off <b>Mounts to:</b> Versions for 1" to 6" (25.4mm to 152.4mm) OD <b>Material:</b> Stainless steel <b>Includes:</b> Stand-offs, avail. w. or w.o. hose clamps <b>Order Sep.:</b> Hangers			
			TMS part no.	Quant/pkg.	Weight lb (kg)
	Universal SST stand-off adapter *	SA-38S	10	3.8	(1.7)
	Universal SST stand-off adapter for 1"-2" OD members**	SA-38S100	10	3.8	(1.7)
	Universal SST stand-off adapter for 2"-3" OD members**	SA-38S200	10	3.8	(1.7)
	Universal SST stand-off adapter for 3"-4" OD members**	SA-38S300	10	4.0	(1.8)
	Universal SST stand-off adapter for 4"-5" OD members**	SA-38S400	10	4.1	(1.9)
Universal SST stand-off adapter for 5"-6" OD members**	SA-38S500	10	4.4	(2.0)	

\* Round member adapters not included

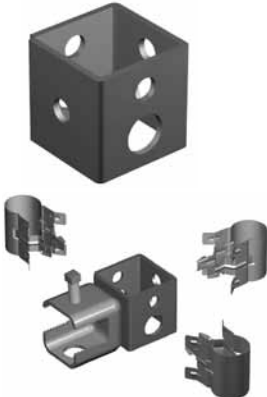
\*\*Round adapter included

### Snap-In Stand-Off Adapters



<p><i>Adapt and stand coax off 2" from round members to avoid obstructions such as tower leg flanges and cross members</i></p>	<p>Application: Coax Support                  Size: 3/4" (19.1mm) hole                  Design: Adapts hangers to round members                  Feature: Accepts snap-ins                  Mounts to: Versions for 1" to 6" (25.4mm to 152.4mm) OD                  Material: Stainless steel                  Includes: Stand-offs, avail. with or without hose clamps                  Order Sep.: Snap-ins</p>	TMS part no.	Quant/pkg.	Weight lb (kg)
	<p>Snap-In Stand-Off Adapter *</p>	SA-SS	10	2.9 (1.3)
<p>Snap-In Stand-Off Adapter for 1-2" (25.4mm-50.8mm) OD members**</p>	SA-SS100	10	3.8 (1.7)	
<p>Snap-In Stand-Off Adapter for 2-3" (50.8mm-76.2mm) OD members**</p>	SA-SS200	10	3.9 (1.8)	
<p>Snap-In Stand-Off Adapter for 3-4" (76.2mm-101.6mm) OD members**</p>	SA-SS300	10	4.0 (1.8)	
<p>Snap-In Stand-Off Adapter for 4-5" (101.6mm-127.0mm) OD members**</p>	SA-SS400	10	4.1 (1.9)	
<p>Snap-In Stand-Off Adapter for 5-6" (127.0mm-152.4mm) OD members**</p>	SA-SS500	10	4.1 (1.9)	
<p>* Round member adapters must be purchased separately **Round member adapter included</p>				

### Mini Cluster Support Bracket



<p><i>Mini Cluster bracket provides compact mounting support for a variety of different hanger types</i></p>	<p>Application: Coax Support                  Size: 3/4" (19.1mm) and 7/16" (11.1mm) holes                  Design: Three-run cluster bracket                  Feature: Compact mounting solution                  Mounts to: -                  Material: Hot dip galv. steel                  Includes: Bracket                  Order Sep.: Hangers, mounting hardware</p>	TMS part no.	Quant/pkg.	Weight lb (kg)
	<p>Mini Cluster Support Bracket</p>	CS-BS	10	4.4 (2.0)

### Round Member Adapters



<p><i>Adapt round members when securing most hanger styles.</i></p>	<p>Application: Coax Support                  Size: 3/4" (19.1mm) and 7/16" (11.1mm) holes                  Design: Three-run cluster bracket                  Feature: Compact mounting solution                  Mounts to: -                  Material: Hot dip galvanized steel                  Includes: Bracket                  Order Sep.: Hangers, mounting hardware</p>	TMS part no.	Quant/pkg.	Weight lb (kg)
	<p>Round member adapter, 1"-2" OD</p>	RMA-100	10	0.8 (0.4)
<p>Round member adapter, 2"-3" OD</p>	RMA-200	10	1.0 (0.5)	
<p>Round member adapter, 3"-4" OD</p>	RMA-300	10	1.2 (0.5)	
<p>Round member adapter, 4"-5" OD</p>	RMA-400	10	1.3 (0.6)	
<p>Round member adapter, 5"-6" OD</p>	RMA-500	10	1.3 (0.6)	
<p>Round member adapter, 6"-8" OD</p>	RMA-600	10	1.3 (0.6)	

**Lace-up Hoisting Grips**



*Hoisting Grips provide an effective method for lifting coax cables to the top of a tower where it is tied off to support the cable weight*

\*LMR-400 Grip is non-lace-up

Application: Coax Support  
 Size: Versions for coax and elliptical waveguide  
 Design: Mesh grip with single eye support  
 Feature: Lace-up installation at any point on coax  
 Mounts to: —  
 Material: Tinned bronze  
 Includes: Grip  
 Order Sep.: —

	TMS part no.	Quant/pkg.	Weight lb	(kg)
Hoisting Grip for LMR-400 Coaxial Cable*	HG-400T	1	0.3	(1.0)
Lace-up Hoisting Grip for LMR-600 Coaxial Cable	HG-600T	1	0.3	(1.0)
Lace-up Hoisting Grip for LMR-900 Coaxial Cable	HG-900T	1	0.4	(0.2)
Lace-up Hoisting Grip for LMR-1200 Coaxial Cable	HG-1200T	1	0.6	(0.3)
Lace-up Hoisting Grip for LMR-1700 Coaxial Cable	HG-1700T	1	0.6	(0.3)

**Universal Weatherproofing Kits**



*Mastic and electrical tape kit facilitates easy installation and provides a long-term environmental seal for connections.*

Application: Coax Protection  
 Size: —  
 Design: Tape kit for multi-layer wrap  
 Feature: Multi-connection protection  
 Mounts to: —  
 Material: Butyl and vinyl  
 Includes: Six (6) rolls mastic, 2-1/2" x 24" (64mm x 610mm)  
 Two (2) rolls electrical tape, 3/4" x 66' (19mm x 20m)  
 One (1) roll electrical tape, 2" x 20' (51mm x 6m)

	TMS part no.	Quant/pkg.	Weight lb	(kg)
Universal Kit (does 6 connections)	WK-U	1	3.4	(1.5)
Vinyl-mastic Kit (does 2 connections)	WK-2	1	0.6	(0.3)

**3M™ Cold Shrink™ Weatherproofing Kits**

*Avoid tapes and mastics with Cold Shrink™. This unique weatherproofing solution installs in less than three minutes, and eliminates the taping processes.*

	TMS part no.	Quant/pkg	Weight lb	(kg)
LMR-400 & LMR-600 (antenna interface)	CS-4060T	1	0.4	(0.2)
LMR-600 (antenna interface)	CS-A-600T	1	0.8	(0.4)
LMR-900 (antenna interface)	CS-A900T	1	0.8	(0.4)
LMR-1200 to LMR-400	CS-40120T	1	0.8	(0.4)
LMR-1200 to LMR-500	CS-50120T	1	0.8	(0.4)
LMR-1200 to LMR-600	CS-60120T	1	0.8	(0.4)
LMR-1200 to LMR-900	CS-90120T	1	0.8	(0.4)
LMR-1700 to LMR-400	CS-40170T	1	1.0	(0.5)
LMR-1700 to LMR-500	CS-50170T	1	1.0	(0.5)
LMR-1700 to LMR-600	CS-60170T	1	0.9	(0.4)
LMR-1700 to LMR-900	CS-90170T	1	0.9	(0.4)



**Weather Seal Strain Relief Boots**



The flexible silicone boot weatherproofing kits replace older weatherproofing methods, require no heat and only simple and easy hand assembly for valuable time saving in the field.

	TMS part no.	Quant/pkg
WSB-240 Weatherproofing/strain relief kit - LMR-240 crimp connectors	3109-400	10 pieces
WSB-400 Weatherproofing/strain relief kit - LMR-400 crimp connectors	3109-394	10 pieces
WSB-600 Weatherproofing/strain relief kit - LMR-600 crimp connectors	3109-401	10 pieces



### Rapid-Tite Self Bonding Silicone Tape



Self-bonding silicone tape is a cost effective, labor saving alternative to traditional vinyl mastic and butyl rubber sealing kits.

	TMS part no.	Quant/pkg	No. Connections
1.5" wide x 15' length x 30 mil. silicone tape	WK-S-1	1	6
	WK-S-2	2	12

### Standard Ground Kits



*Pre-formed copper strap facilitates easy installation and protects coax from lightning strikes in excess of 200 kA*

Application: Grounding  
 Size: Versions for coax and elliptical waveguide  
 Design: Bolt-on style with 3' (0.9m) lead / crimp lug  
 Feature: RoHS compliant  
 Mounts to: Coax outer conductor  
 Material: Tin plated copper strap  
 Includes: Ground kit, lug, weatherproofing kit

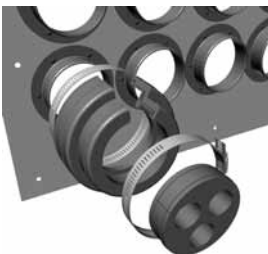
	TMS part no.	Quant/pkg.	Weight lb	(kg)
Standard Ground Kit for LMR-195 Coaxial Cable	GK-S195TT	1	1.4	(0.6)
Standard Ground Kit for LMR-200 Coaxial Cable	GK-S200TT	1	1.4	(0.6)
Standard Ground Kit for LMR-240 Coaxial Cable	GK-S240TT	1	1.4	(0.6)
Standard Ground Kit for LMR-300 Coaxial Cable	GK-S300TT	1	1.4	(0.6)
Standard Ground Kit for LMR-400 Coaxial Cable	GK-S400TT	1	1.4	(0.6)
Standard Ground Kit for LMR-500 Coaxial Cable	GK-S500TT	1	1.4	(0.6)
Standard Ground Kit for LMR-600 Coaxial Cable	GK-S600TT	1	1.4	(0.6)
Standard Ground Kit for LMR-900 Coaxial Cable	GK-S900TT	1	1.4	(0.6)
Standard Ground Kit for LMR-1200 Coaxial Cable	GK-S1200TT	1	1.4	(0.6)
Standard Ground Kit for LMR-1700 Coaxial Cable	GK-S1700TT	1	1.4	(0.6)

### 4" Feed-thru Entry Panels



*Traditional panel for weather-tight building penetration*

Application: Entry Port Solutions  
 Size: 20 configurations  
 Design: Entry plates with round ports  
 Feature: Easy to install solution  
 Mounts to: Walls  
 Material: Aluminum  
 Includes: Port, caps, mounting hardware  
 Order Sep.: 4" (101.6mm) Boot Assemblies



	TMS part no.	Quant/pkg.	Weight lb	(kg)
Entry Panel, 1 port, 1 x 1, standard	EP-220	1	1.0	(0.5)
Entry Panel, 1 port, 1 x 1, compact	EP-574	1	0.6	(0.3)
Entry Panel, 2 port, 1 x 2	EP-1448	1	2.3	(1.0)
Entry Panel, 3 port, 1 x 3	EP-1635	1	2.9	(1.3)
Entry Panel, 4 port, 1 x 4	EP-575	1	3.5	(1.6)
Entry Panel, 4 port, 2 x 2, standard	EP-1199	1	4.2	(1.9)
Entry Panel, 4 port, 2 x 2, compact	EP-1650	1	4.0	(1.8)
Entry Panel, 6 port, 2 x 3	EP-1449	1	6.1	(2.8)
Entry Panel, 6 port, 1 x 6	EP-1477	1	6.0	(2.7)
Entry Panel, 8 port, 2 x 4, standard	EP-576	1	6.1	(2.8)
Entry Panel, 8 port, 2 x 4, large	EP-1338	1	6.0	(2.7)
Entry Panel, 9 port, 3 x 3	EP-1033	1	7.1	(3.2)
Entry Panel, 10 port, 2 x 5	EP-1297	1	7.4	(3.4)
Entry Panel, 12 port, 3 x 4, standard	EP-1118	1	8.5	(3.9)
Entry Panel, 12 port, 3 x 4, large	EP-1334	1	7.0	(3.2)
Entry Panel, 12 port, 2 x 6	EP-1336	1	9.2	(4.2)
Entry Panel, 16 port, 4 x 4	EP-1447	1	9.1	(4.1)
Entry Panel, 18 port, 3 x 6	EP-1333	1	13.0	(5.9)
Entry Panel, 20 port, 4 x 5	EP-1861	1	11.0	(5.0)
Entry Panel, 24 port, 4 x 6	EP-1340	1	15.8	(7.2)

Note: Custom configurations available. Contact your sales administrator for details

## IPB Weather Proof Boots

	IPB-400-NM	3109-417-1	LMR-400 Male IP boot suitable for type N, TNC, BNC, 4310, 4195
	IPB-400-NF	3109-417-2	LMR-400 Female IP boot suitable for type N, TNC, BNC, 4310, 4195
	IPB-400-NM-RA	3109-417-3	LMR-400 Male IP boot right angle suitable for type N, TNC, BNC, 4310, 4195
	IPB-600-NM	3109-417-4	LMR-600-NM Male IP boot suitable for type N, TNC, BNC, 4310, 4195
	IPB-600-NF	3109-417-5	LMR-600-NF Female IP boot suitable for type N, TNC, BNC, 4310, 4195
	IPB-600-NM-RA	3109-417-6	LMR-600-NM-RA Male IP boot right angle suitable for type N, TNC, BNC, 4310, 4195
	IPB-OR-NF	3109-417-7	Antenna port O-ring suitable for type N female
	IPB-250-NM	3109-417-8	SPO-250 (FSJ1) Male IP boot suitable for type N, TNC, BNC, 4310, 4195
	IPB-250-NM-RA	3109-417-9	SPO-250 (FSJ1) Male IP boot right angle suitable for type N, TNC, BNC, 4310, 4195
	IPB-250-DM	3109-417-10	SPO-250 (FSJ1) Male IP boot suitable for type DIN 7/16 connector
	IPB-250-DM-RA	3109-417-11	SPO-250 (FSJ1) Male IP boot right angle suitable for type DIN 7/16 connector

**IPB Weather Proof Boots**

	IPB-500-NM	3109-417-12	SPO-500 (FSJ1) Male IP boot suitable for type N, TNC, BNC, 4310, 4195
	IPB-500-NM-RA	3109-417-13	SPO-500 (FSJ1) Male IP boot right angle suitable for type N, TNC, BNC, 4310, 4195
	IPB-500-DM	3109-417-14	SPO-500 (FSJ1) Male IP boot suitable for type DIN 7/16 connector
	IPB-500-DM-RA	3109-417-15	SPO-500 (FSJ1) Male IP boot right angle suitable for type DIN 7/16 connector
	IPB-LPO-500-NM	3109-417-16	LPO-500 (LDF4) Male IP boot suitable for type N, TNC, BNC, 4310, 4195
	IPB-LPO-500-NM-RA	3109-417-17	LPO-500 (LDF4) Male IP boot right angle suitable for type N, TNC, BNC, 4310, 4195
	IPB-LPO-500-DM	3109-417-18	LPO-500 (LDF4) Male IP boot suitable for type DIN 7/16 connector
	IPB-LPO-500-DM-RA	3109-417-19	LPO-500 (LDF4) Male IP boot right angle suitable for type DIN 7/16 connector
	IPB-LPO-875-DF	3109-417-20	(LPO-875) AVA5-50FX DIN 7/16 universal boot
	IPB-OR-DF	3109-417-21	Antenna port O-ring IP boot for DIN 7/16 female
	Rubber Slide	3109-424	Lubricant for WSB and IPB boots



## Hardware Accessories

### Feed-Thru Boot Assemblies



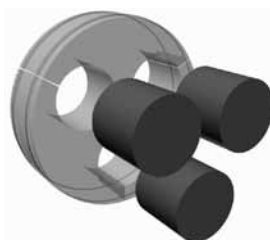
<p><i>Innovative one-piece design simplifies installation. For use with EP-series feed-thru entry panels. Order cushion insert separately.</i></p>	<p>Application: Entry Port Solutions                  Size: 4" (101.6mm)                  Design: Compression boot for aluminum entry panels                  Feature: One-piece design simplifies installation                  Mounts to: Entry panels                  Material: EPDM rubber                  Includes: Boot, two hose clamps                  Order Sep.: Cushion Inserts, Entry Panel</p>			
	<p>TMS part no.      Quant/pkg.      Weight lb (kg)</p>			
<p>4" Boot assembly, cushion not included</p>	<p>BA-400</p>	<p>1</p>	<p>1.3</p>	<p>(0.6)</p>

### Cushion Inserts



<p><i>Standard port cushions are used with BA-400 boot assembly.</i></p>	<p>Application: Entry Port Solutions                  Size: Versions for coax and elliptical waveguide                  Design: Compression fit round cushions                  Feature: Dependable seal                  Mounts to: Feed-Thru Boot Assembly                  Material: EPDM rubber                  Includes: Cushion                  Order Sep.: Boot Assembly, Entry Panel</p>			
	<p>TMS part no.      Quant/pkg.      Weight lb (kg)</p>			
<p>Standard port cushion, blank (no holes)</p>	<p>SC-B</p>	<p>1</p>	<p>0.4</p>	<p>(0.2)</p>
<p>Standard port cushion with 6 holes for LMR-400 coax</p>	<p>SC-400T-6</p>	<p>1</p>	<p>0.4</p>	<p>(0.2)</p>
<p>Standard port cushion with 1 hole for LMR-600 coax</p>	<p>SC-600T-1</p>	<p>1</p>	<p>0.4</p>	<p>(0.2)</p>
<p>Standard port cushion with 2 holes for LMR-600 coax</p>	<p>SC-600T-2</p>	<p>1</p>	<p>0.4</p>	<p>(0.2)</p>
<p>Standard port cushion with 3 holes for LMR-600 coax</p>	<p>SC-600T-3</p>	<p>1</p>	<p>0.4</p>	<p>(0.2)</p>
<p>Standard port cushion with 4 holes for LMR-600 coax</p>	<p>SC-600T-4</p>	<p>1</p>	<p>0.4</p>	<p>(0.2)</p>
<p>Standard port cushion with 1 hole for LMR-900 coax</p>	<p>SC-900-1</p>	<p>1</p>	<p>0.4</p>	<p>(0.2)</p>
<p>Standard port cushion with 2 holes for LMR-900 coax</p>	<p>SC-900-2</p>	<p>1</p>	<p>0.4</p>	<p>(0.2)</p>
<p>Standard port cushion with 3 holes for LMR-900 coax</p>	<p>SC-900-3</p>	<p>1</p>	<p>0.4</p>	<p>(0.2)</p>
<p>Standard port cushion with 4 holes for LMR-900 coax</p>	<p>SC-900-4</p>	<p>1</p>	<p>0.4</p>	<p>(0.2)</p>
<p>Standard port cushion with 1 hole for LMR-1200 coax</p>	<p>SC-1200T-1</p>	<p>1</p>	<p>0.4</p>	<p>(0.2)</p>
<p>Standard port cushion with 2 holes for LMR-1200 coax</p>	<p>SC-1200T-2</p>	<p>1</p>	<p>0.4</p>	<p>(0.2)</p>
<p>Standard port cushion with 3 holes for LMR-1200 coax</p>	<p>SC-1200T-3</p>	<p>1</p>	<p>0.3</p>	<p>(0.1)</p>
<p>Standard port cushion with 1 hole for LMR-1700 coax</p>	<p>SC-1700T-1</p>	<p>1</p>	<p>0.3</p>	<p>(0.1)</p>

### Cushion Plugs



<p><i>Cushion plugs are used to fill unoccupied holes.</i></p>	<p>Application: Entry Port Solutions                  Size: 1/2" to 1-5/8" coax                  Design: Plugs for unused cushion holes                  Feature: Allows for future expansion                  Mounts to: Cushion Inserts                  Material: EPDM rubber                  Includes: Plugs                  Order Sep.: Cushion Inserts or Boot Assemblies</p>			
	<p>TMS part no.      Quant/pkg.      Weight lb (kg)</p>			
<p>Cushion plug for LMR-400 coax</p>	<p>CP-400T</p>	<p>5</p>	<p>0.2</p>	<p>(0.1)</p>
<p>Cushion plug for LMR-600 coax</p>	<p>CP-600T</p>	<p>5</p>	<p>0.2</p>	<p>(0.1)</p>
<p>Cushion plug for LMR-900 coax</p>	<p>CP-900T</p>	<p>5</p>	<p>0.3</p>	<p>(0.1)</p>
<p>Cushion plug for LMR-1200 coax</p>	<p>CP-1200T</p>	<p>5</p>	<p>0.3</p>	<p>(0.1)</p>
<p>Cushion plug for LMR-1700 coax</p>	<p>CP-1700T</p>	<p>5</p>	<p>0.5</p>	<p>(0.2)</p>